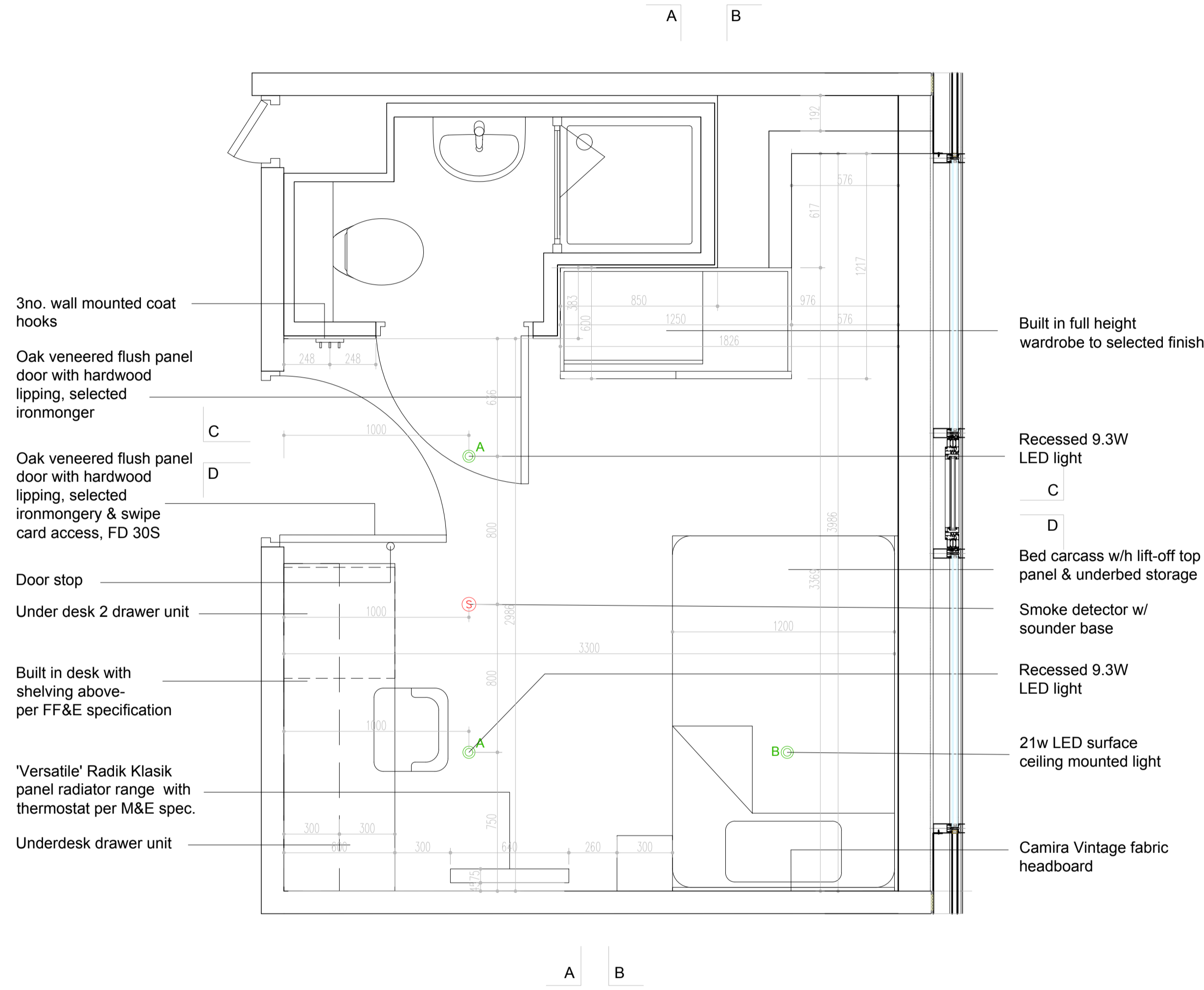
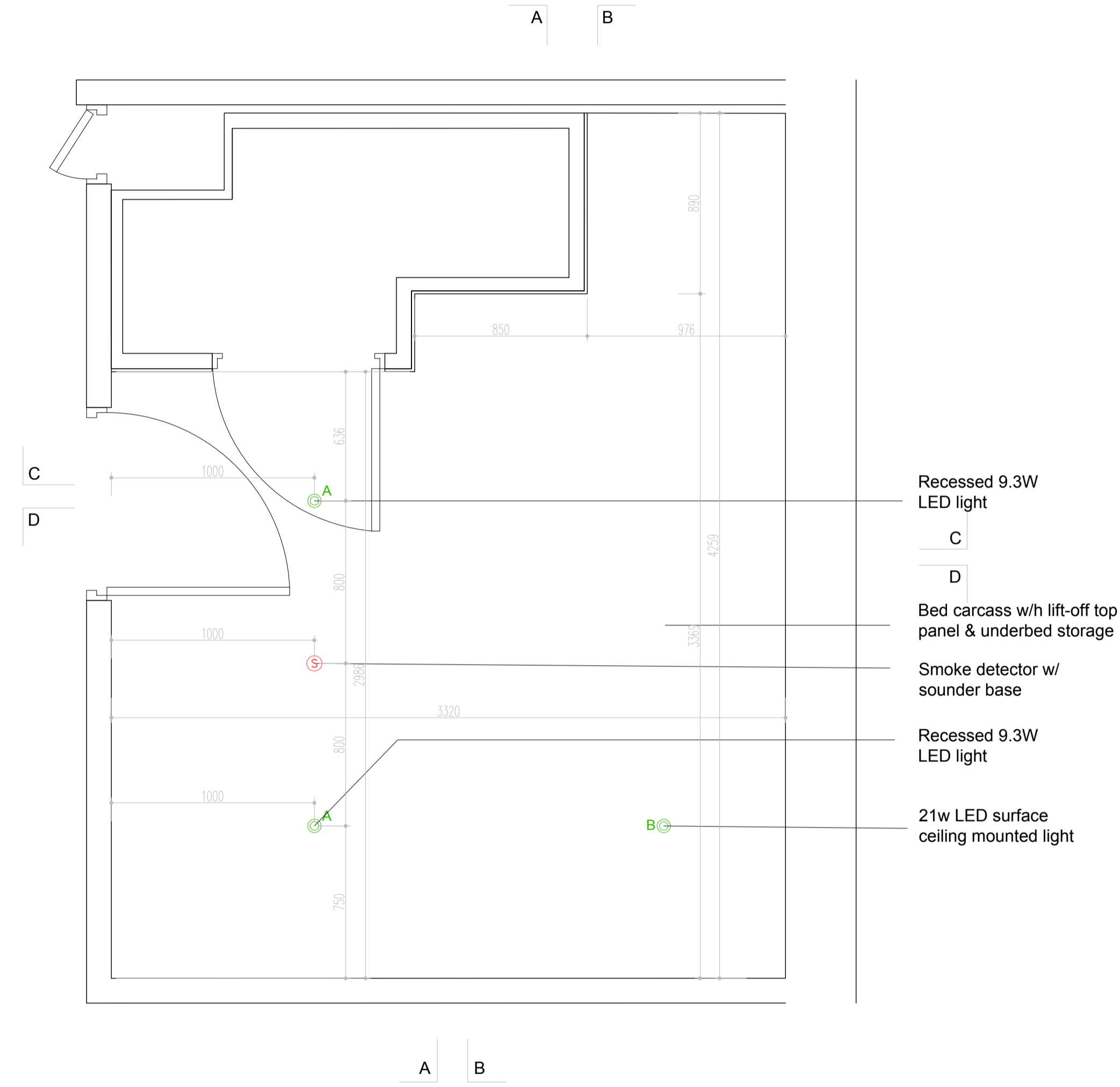


NO.	DATE	REVISION



TYPE J - Floor Plan



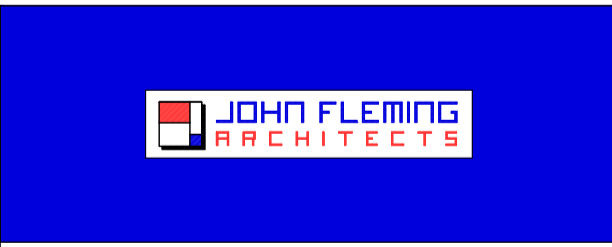
Type J - Reflected Ceiling Plan

### LEGEND

	Twin socket
	Twin socket with 2 No. USB ports
	9.3W LED recessed downlighter
	21W LED surface mounted light (Guzzini 5031-01)
	Light switch
	2 Way light switch
	Smoke detector with sounder base
	Room sensor
	Data point

### GENERAL NOTES

1. Refer to M&E drawings & specification for detailed electrical & mechanical layouts.
2. Overall room dimensions may vary. Refer to W-30-100series for specific room sizes.
3. All FF&E items to be in accordance with client approved FF&E schedule.
4. Window position, orientation & size may vary. Refer to W-20-100series for specific rooms



103 LEESON STREET UPPER, DUBLIN 4.  
Telephone: 011 688 9888  
e-mail: info@jfa.ie  
web: www.jfa.ie

DATE	17.01.2017.	PROJECT NO	1447
CLIENT	Carrowmore Property Ltd.		
PROJECT	Student Residence Gardiner Street		
DRAWN BY	Series 30 Unit Layouts Typical Bedroom Arrangements		
DATE	17.01.2017.	PROJECT NO	1447
SCALE	1 : 20 @ A1	DRAWN BY	W:JGBS
REVISION	CN/TON/AC	DRAWN BY	W-30-222
REVISION	Construction	REVISION	

Note: Refer to 20 Series: General Arrangement drawings for locations of room types  
Desk sockets to be set out from opposite end of desk in handed versions of room layout.